

# THE SKY'S THE LIMIT

DIGITALISING THE FACTORY FLOOR TO REACH FOR THE SKY



# MAKS KANIUKA

SOLUTIONS IMPLEMENTATION CONSULTANT





# AGENDA

- USE CASE
- DEMO
- HOW DOES IT WORK?
- IMPLEMENTATION STRATEGY
- BUSINESS BENEFITS

# USE CASE

Example of digital transformation for your business!

# SME MANUFACTURER TODAY



Setup machines

Load material

Material handling

Record production progress

Record downtime with reason codes

Report issues and breakdowns



Machine specific production activity

Display job/operation status

Display production time

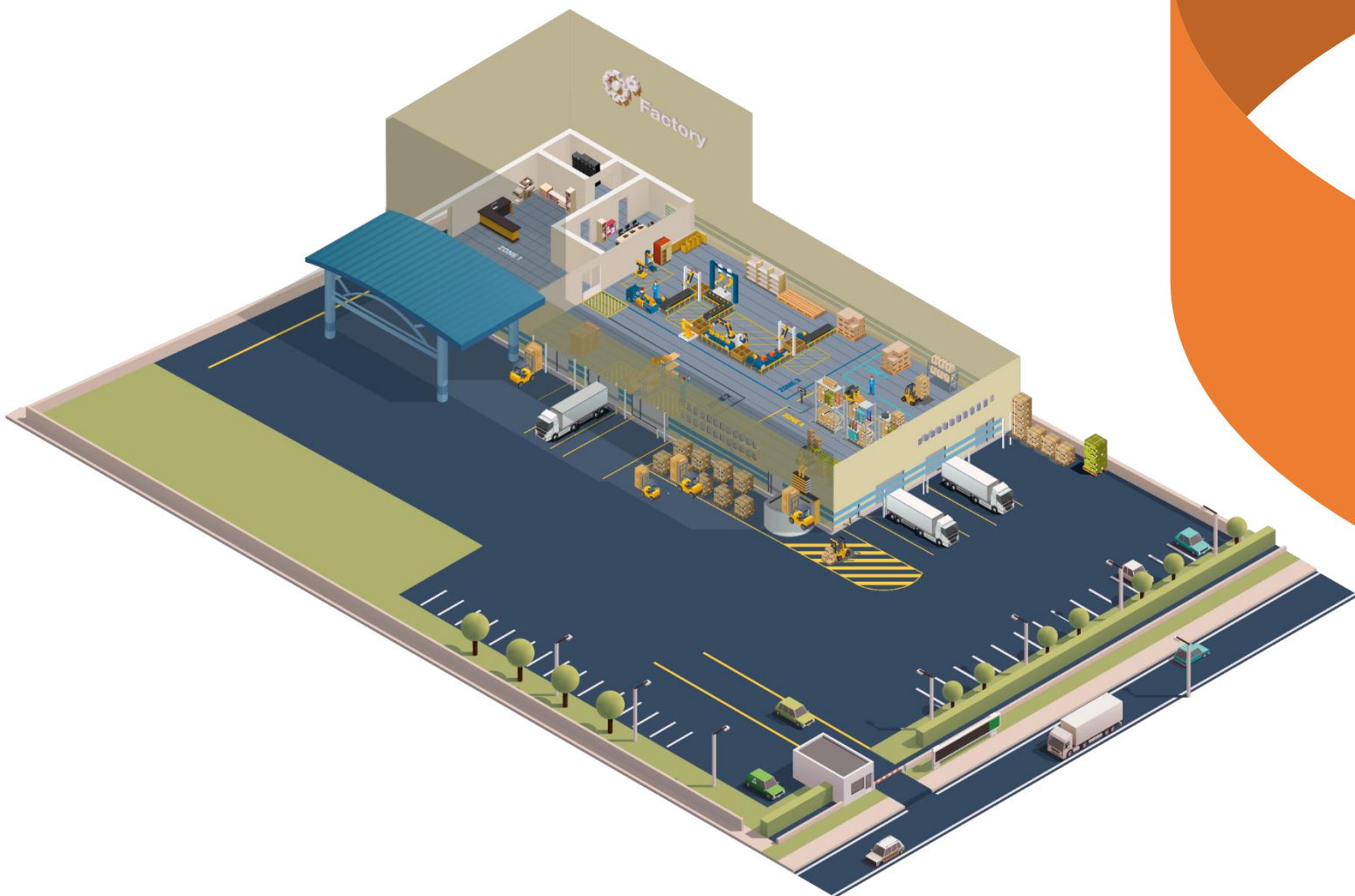
Display downtime

Display good and bad quantity produced

Display machine status

Manual collection

Manual recording



 SYSPRO™

# SME MANUFACTURER TOMORROW



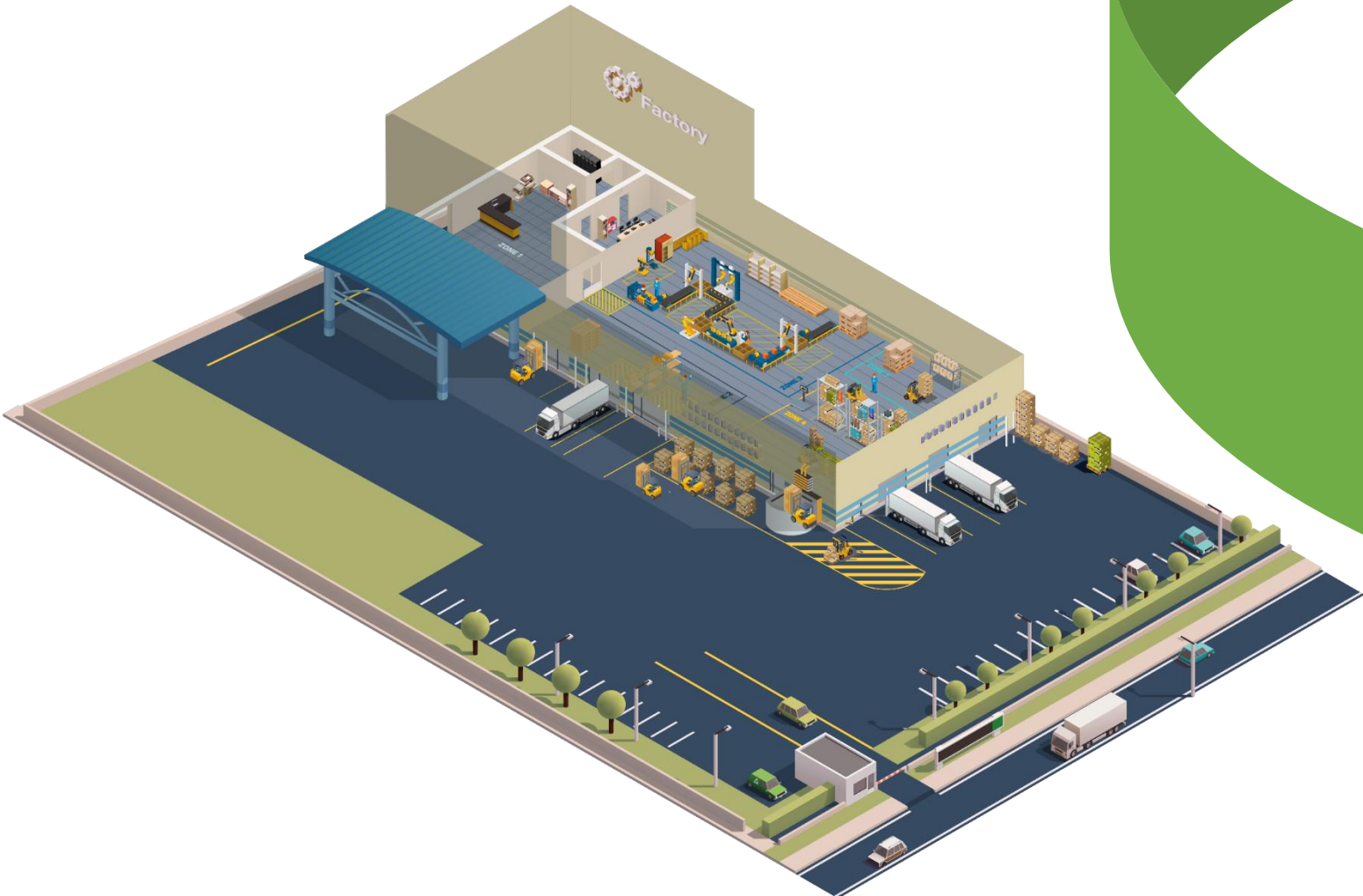
- Setup machines
- Load material
- Material handling
- Record production progress
- Record downtime with reason codes
- Report issues and breakdowns



- Machine specific production activity
  - Display job/operation status
  - Display production time
  - Display downtime
  - Display good and bad quantity produced
  - Display machine status

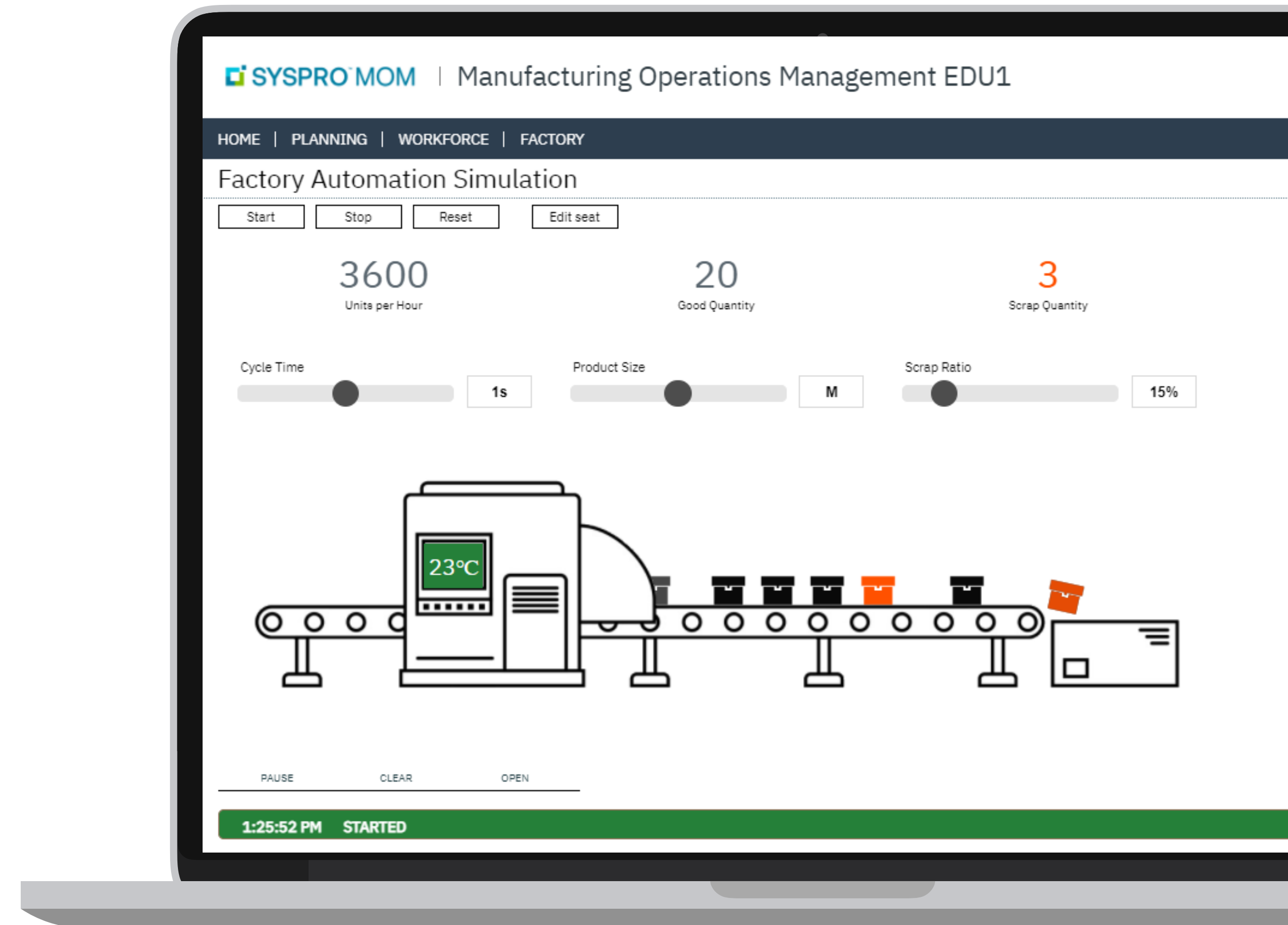
Auto collection

Auto recording



# DEMO

- Planning and Scheduling
- Manual, Auto, and Hybrid Data Collection
- Equipment and Employee Live Status Tracking
- Factory Automation Simulation
- Loss Analysis
- Alerts and Issues

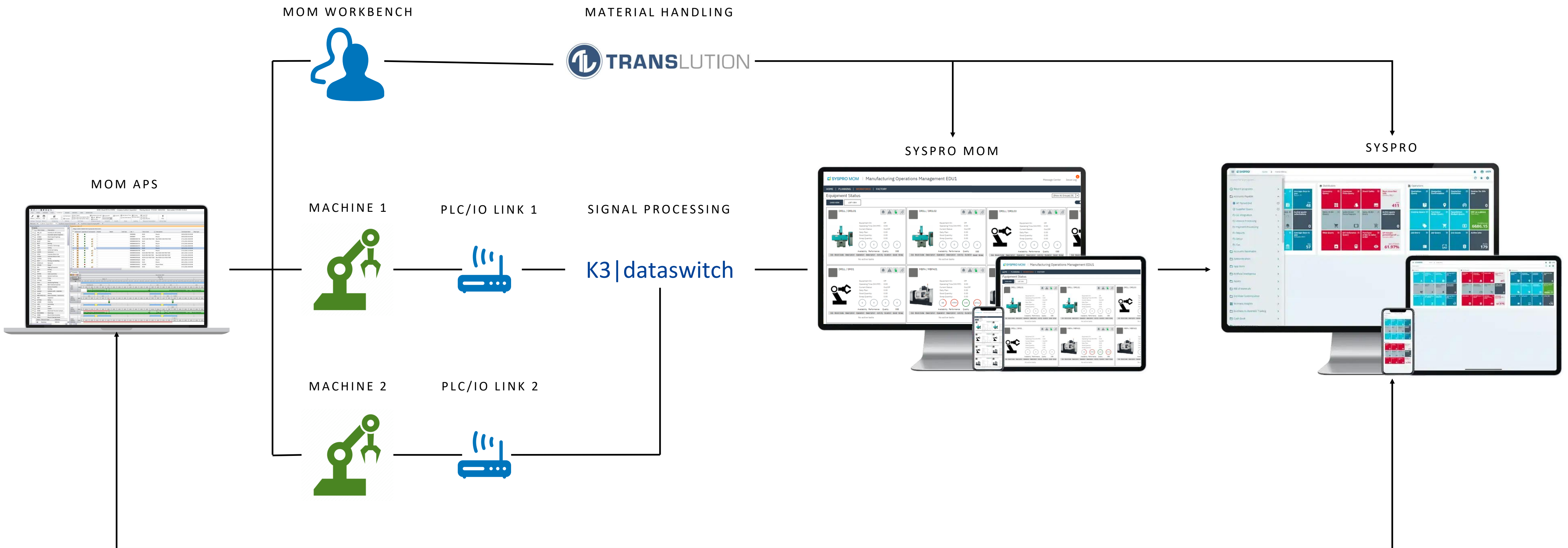


# HOW DOES IT WORK?

Magic?



# DIGITALISATION DATAFLOW



# DATA COLLECTION



## MANUAL

Data is entered by the operator using customisable touch-screen Terminals:

- Employee time
- Breaks and issue reporting
- Label printing/re-printing
- Material issue



## AUTO

Data is automatically gathered from 140+ supported PLC/IO devices:

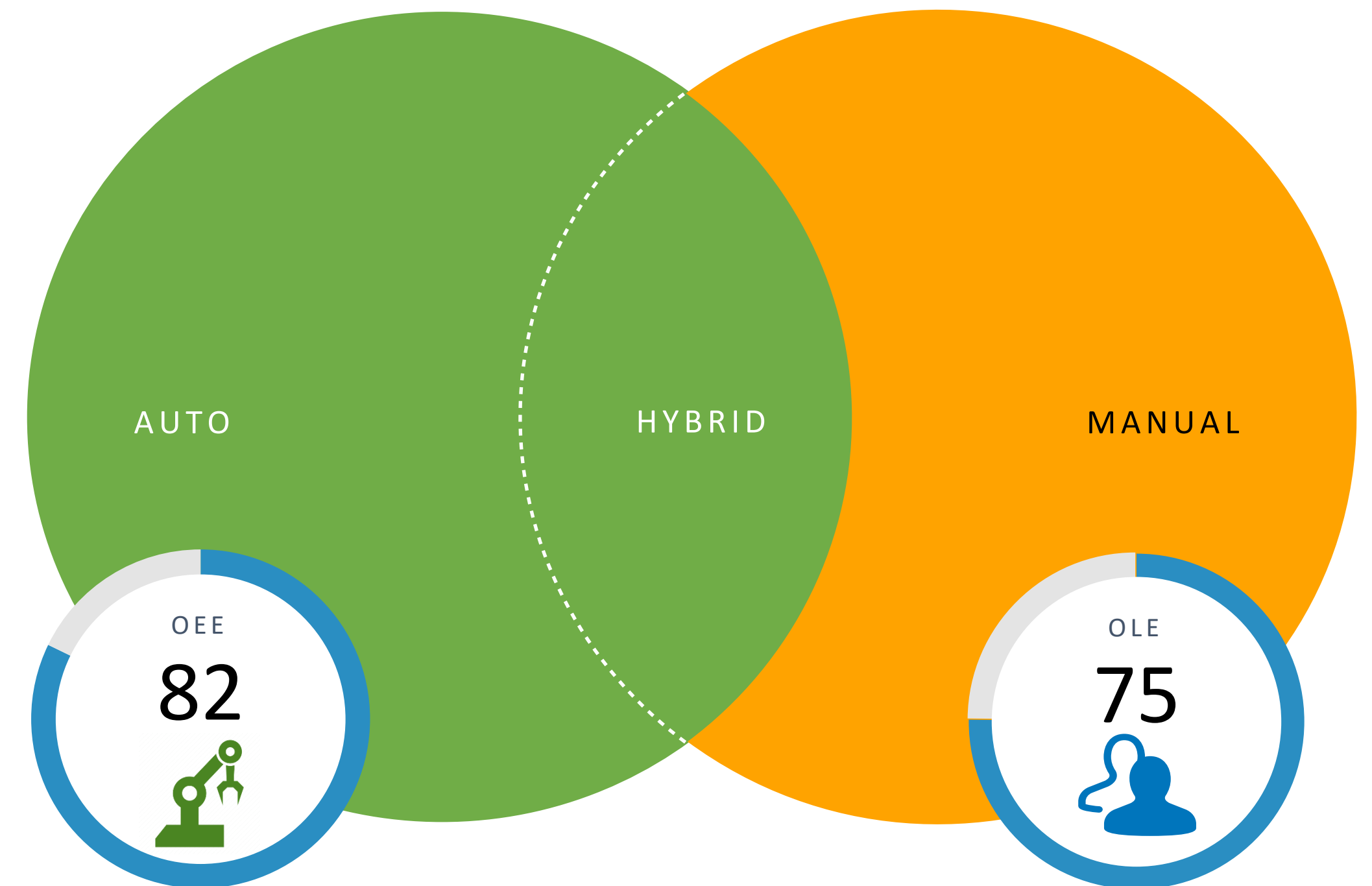
- Machine time
- Job progress reporting
- Machine status



## HYBRID

Combination of data from employees and machines that are not enabled for automation.

- Machine time where automation is not enabled
- Job progress reporting for both Employees and Machines
- Data collection from more sources



# IMPLEMENTATION STRATEGY

Distinguish real from hype, set priorities, form strategy!



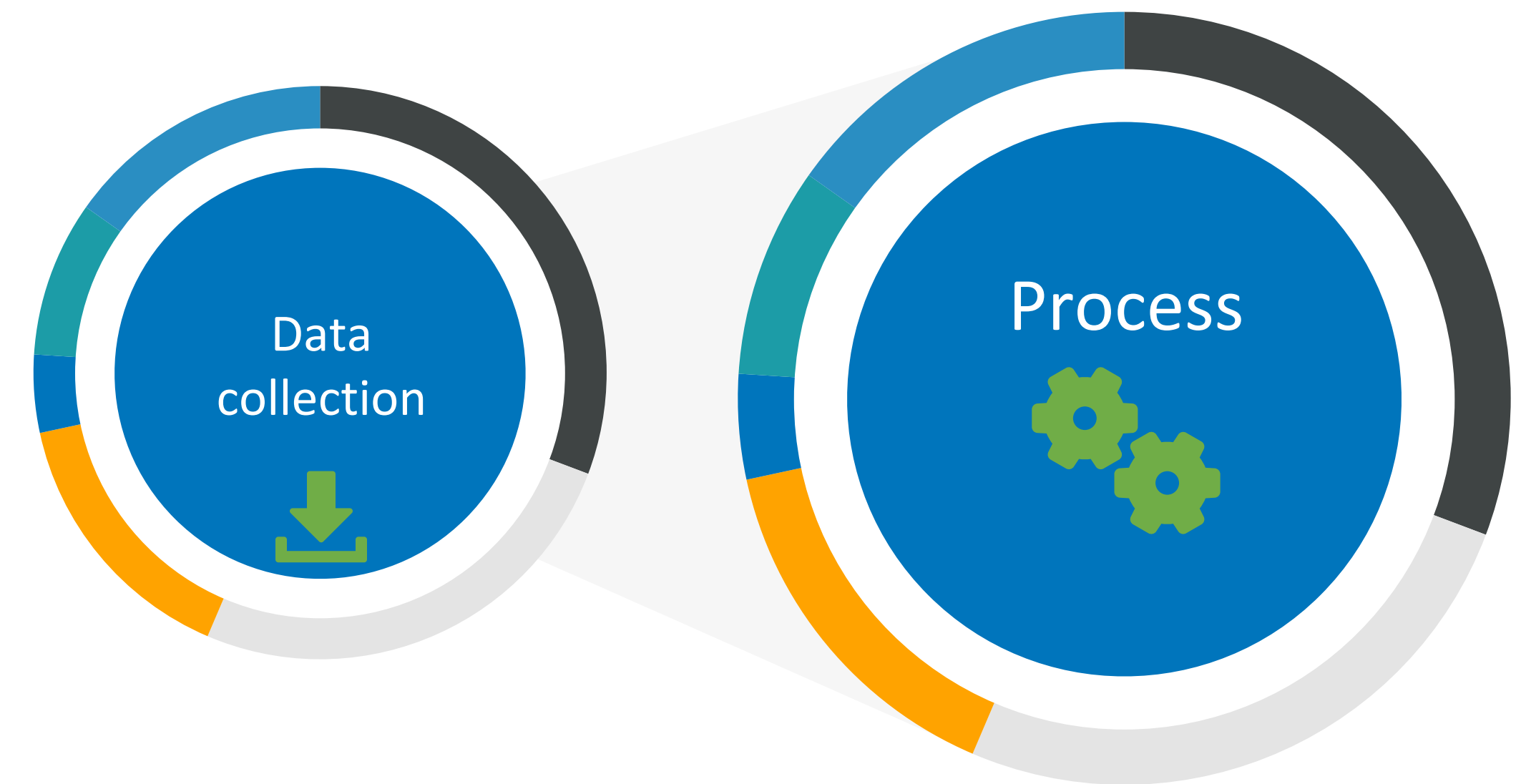
# DIGITISATION VS DIGITALISATION

## **Digitisation: from analogue information to digital data**

Barcoding materials to enable efficient material handling as it travels through the production environment

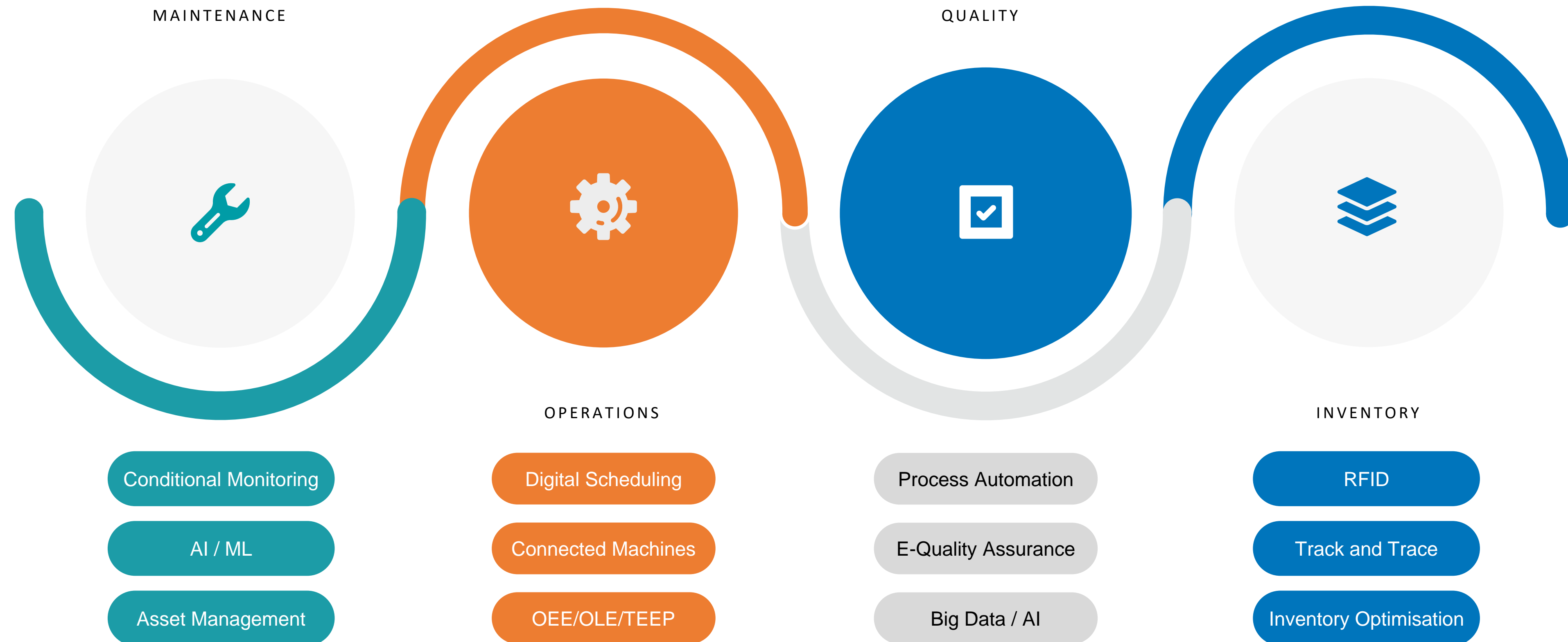
## **Digitalisation: transforming business processes**

Integrating machines and systems in order to streamline the flow of information through the business and eliminate non-value-add processes.



# DIGITAL TRANSFORMATION: STRATEGY

Digital transformation initiatives involves entire supply chain



It does not happen overnight!

# BUSINESS BENEFITS

## EFFECTIVENESS

Maximise equipment availability, performance, and quality

## TIME

Fine tune production process to build optimum manufacturing flows

## VISIBILITY

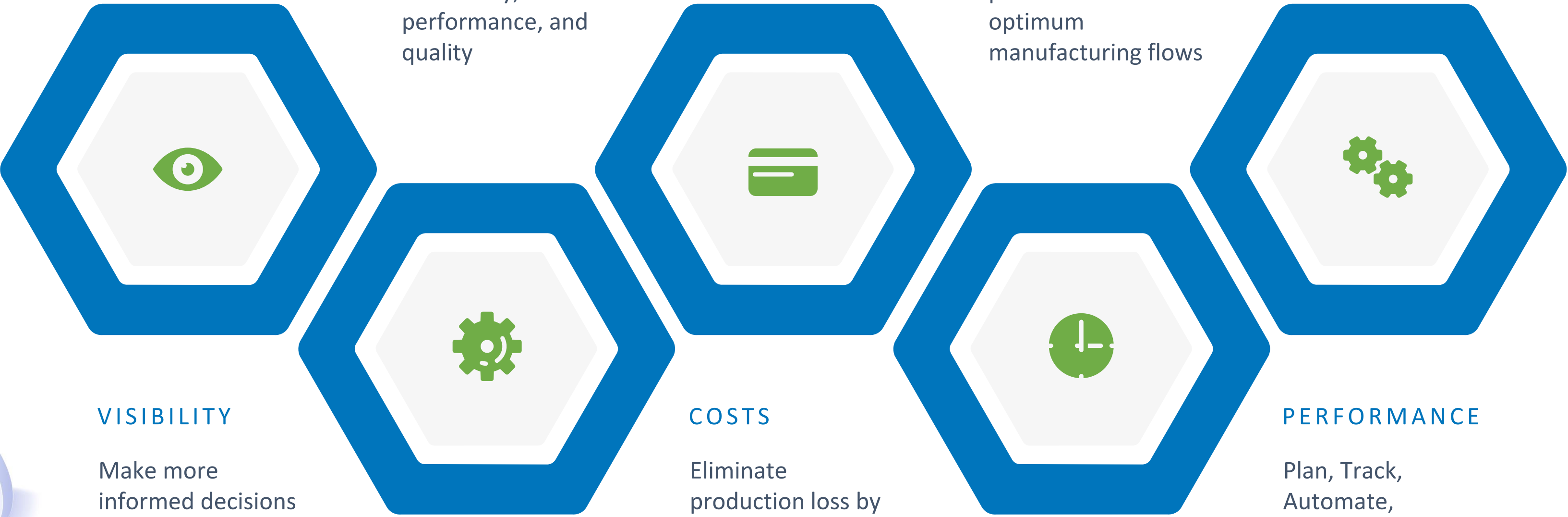
Make more informed decisions with real-time picture of operational status

## COSTS

Eliminate production loss by gaining intelligent analytical insights

## PERFORMANCE

Plan, Track, Automate, Analyse, Optimise





MAKS KANIUKA

SOLUTIONS IMPLEMENTATION CONSULTANT

THANK YOU!





# RESOURCES



SUPPORT  
ZONE

[HTTPS://INFOZONE.SYSPRO.COM/SUPPORT/SYSPRO8/](https://infozone.syspro.com/support/syspro8/)

All stop shop for SYSPRO documentation and training materials

PRESS F1

**SYSPRO ONLINE HELP**

Contextual online help at the press of a button

NEWSLETTER

**IN YOUR INBOX**

Ask your Account Manager to add you to the mailing list

K3 HELPDESK

[K3SYSPROSUPPORT@K3BTG.COM](mailto:k3sysprosupport@k3btg.com)

Contact our helpdesk for support queries

CUSTOMER  
CARE

[SYSPROCUSTOMERCARE@K3BTG.COM](mailto:sysprocustomer@k3btg.com)

Contact our Customer Experience Team for any questions/concerns/feedback



# THANK YOU TO OUR SPONSORS !

Platinum Sponsor



**DocuWare**

Silver Sponsors

